

Instructions by Time4Sleep Products

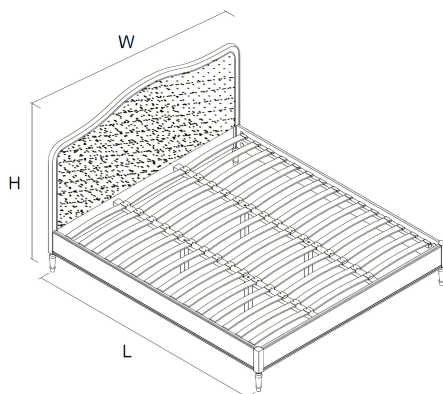
Lille Oak Upholstered Bed Frame

Assembly instructions for Lille Oak Upholstered Bed Frame by Time4Sleep.



Product Information

Lille Oak Upholstered Bed Frame



Description

Introducing our beautifully crafted weathered oak upholstered bed - the perfect combination of rustic charm and modern comfort. This bed is constructed from high-quality weathered oak, which gives it a distinctive, textured appearance that complements any bedroom decor.

The upholstered headboard is designed with comfort in mind, providing a soft, cushioned surface for you to lean back on while reading or watching TV in bed. The natural tones and textures of the weathered oak complement the soft, neutral upholstery, creating a warm and inviting atmosphere in your bedroom.

The bed is built to last, with a sturdy wooden frame and high-quality materials that ensure it will provide a comfortable and supportive sleeping surface for years to come. The weathered oak finish is not only beautiful, but also easy to maintain, making this bed a practical choice for any home.

Available in a range of sizes to suit your needs, this weathered oak upholstered bed is a versatile piece of furniture that will look great in any bedroom. It's the perfect choice for anyone who wants to create a warm and inviting atmosphere in their home, while still enjoying the modern comforts of a high-quality upholstered bed.



Overall, this weathered oak upholstered bed is a beautiful and practical choice for any home. With its rustic charm and modern comfort, it's sure to become a treasured addition to your bedroom decor.

Product specifications

	Double	King Size	Super King
Width	144 cm	159 cm	189 cm
Length	201 cm	211 cm	213 cm
Head End Height	116 cm	116 cm	116 cm
Foot End Height	36 cm	36 cm	36 cm

SKU

Lille46Oak, Lille50Oak, Lille60Oak

Before you start

- Please read this sheet prior to assembly to familiarise yourself with the various stages of construction.
- Carefully open the pack supplied and check the contents against the parts and fittings check list. Do not destroy any of the packaging until you are certain that you have all the necessary parts for the assembly.
- Please ensure that the packaging is disposed of in a safe environmentally friendly way.
- **Caution:** There are small components used in the construction of this unit. These loose items should be kept away from young children during assembly, to avoid danger of choking.

Care & Maintenance

In the unlikely event of missing or damaged parts, please contact your retailer.

Please have this guide at hand quoting the part code reference numbers shown when requesting spare or replacement parts.



General Hints & Tips

- Two person assembly
- Please retain your assembly instruction and tools provided for future use. Periodically check that all bolts are still tight.

Tools

A - Bolt (M8x35mm) (2 for Double & King, 4 for Super King)



2

C - Nut (10 for Double & King, 12 for Super King)



10

E - Spring Washer (10 for Double & King, 12 for Super King)



10

G - Spanner



1

K - Allen Key



1

B - Threaded stud (M8x80mm) (10 for Double & King, 12 for Super King)



10

D - Flat Washer (10 for Double & King, 12 for Super King)



10

F - Half-moon Bracket (10 for Double & King, 12 for Super King)



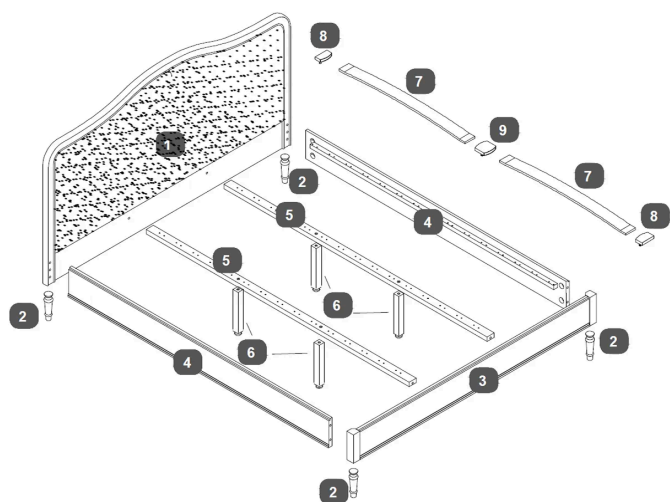
10

H - Dowel



4

Parts



1 Headboard

1 piece(s)

2 Leg

4 piece(s)

3 Footboard

1 piece(s)

4 Side Rail

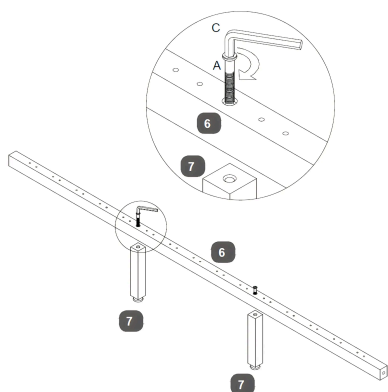
2 piece(s)



- 5 Centre Rail (1 for Double & King, 2 for Super King)
- 6 Centre Rail Support Leg (2 for Double & King, 4 for Super King)
- 7 Bentwood Slats (28 for Double, 30 for King, 45 for Super King)
- 8 Single Plastic Caps (28 for Double, 30 for King, 30 for Super King)
- 9 Double Plastic Caps (14 for Double, 15 for King, 30 for Super King)

Steps (5)

1. Attach the Centre Rail Support Legs



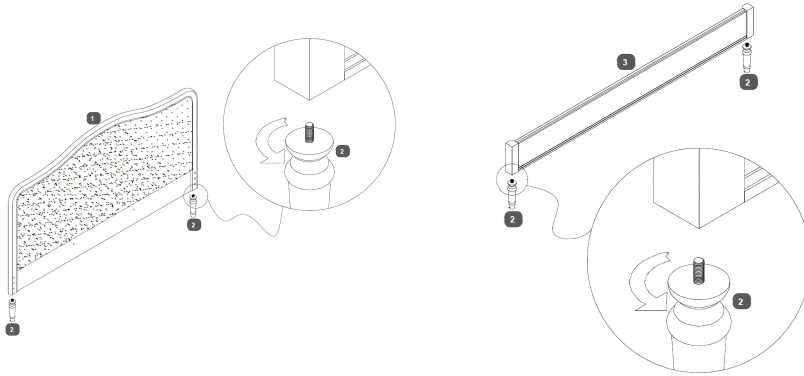
1. Align the Centre Rail Support Legs (6) with the pre-drilled holes on the Centre Rail (5).
2. Insert an M8x35mm Bolt (A) through the centre rail and into the support leg.
3. Use the Allen Key (K) to tighten the bolt securely.
4. Repeat for all support legs.

Note: If assembling the **Super King** size, there are two Centre Rails (5) instead of one. Each rail will require two Centre Rail Support Legs (6), totaling four legs.



2. Attach the Legs to the Headboard and Footboard

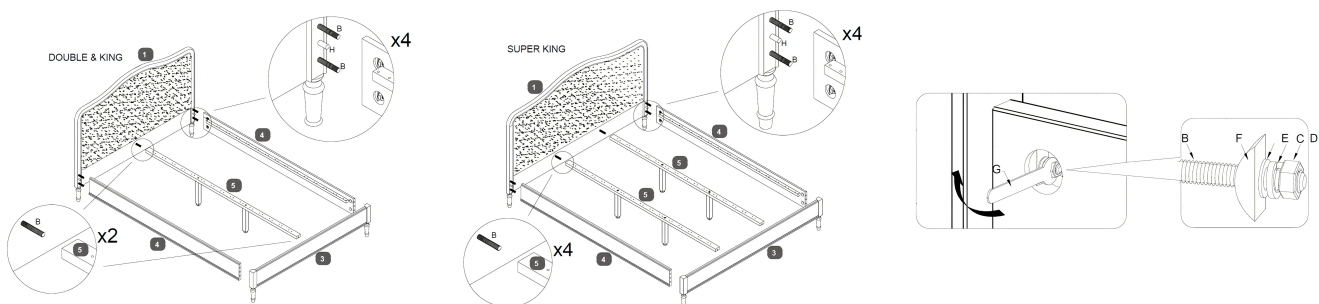
1. Align each Leg (2) with the pre-drilled holes on the bottom of the Headboard (1) and Footboard (3).
2. Rotate each leg clockwise to screw it securely into place.



3. Attach the Side Rails and Centre Rail

1. Insert 5 Threaded Studs (B) and 2 Dowels (H) into the pre-drilled holes on the Headboard (1) and Footboard (3).
2. Align the Side Rails (4) and the Centre Rail (5) with the studs and the dowels, and push them into place.
3. Secure the connection by attaching a Half-moon Bracket (F), followed by a Flat Washer (D), Spring Washer (E), and Nut (C) onto each stud.
4. Use the Spanner (G) to tighten all nuts securely.
5. Repeat this process with every connection.

Note: If assembling the **Super King** size, use 12 Threaded Studs (B), 12 Nuts (C), 12 Flat Washers (D), 12 Spring Washers (E), 12 Half-moon Brackets (F) and 4 Dowels (H).

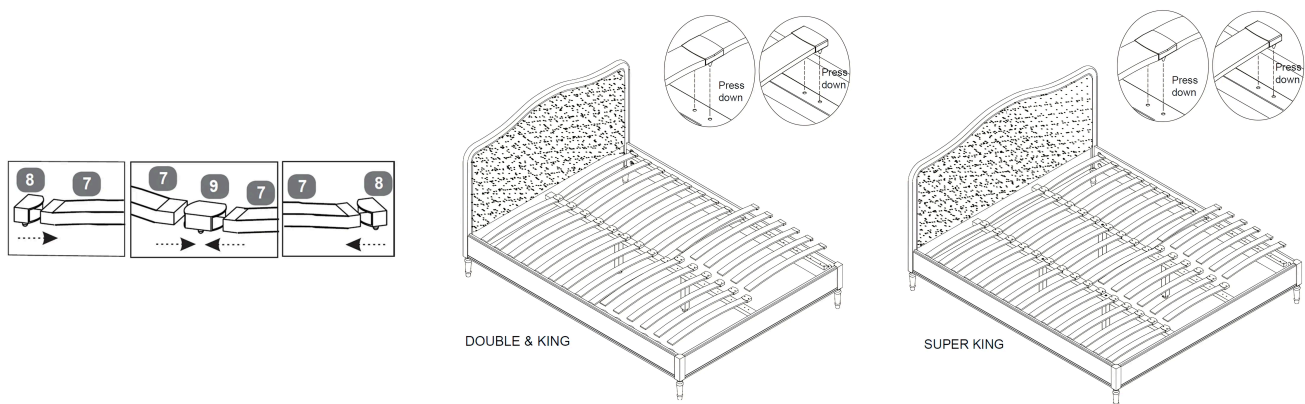


4. Install the Slats

1. Attach Single Plastic Caps (8) to the ends of the Bentwood Slats (7) that will be inserted into the Side Rails (4).
2. Attach Double Plastic Caps (9) to the ends of the slats that will be inserted into the Centre Rail (5).
3. Insert each end of the slats into the designated slots on the Side Rails (4) and Centre Rail (5).
4. Press down firmly to ensure each slat is securely in place.

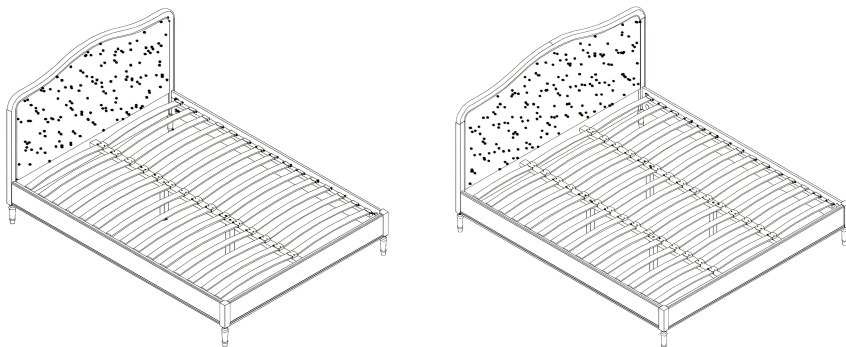
Number of slats for each size:

- **Double:** 28 Bentwood Slats / 28 Single Plastic Caps / 14 Double Plastic Caps.
- **King:** 30 Bentwood Slats / 30 Single Plastic Caps / 15 Double Plastic Caps
- **Super King:** 45 Bentwood Slats / 30 Single Plastic Caps / 30 Double Plastic Caps



5. Final Check

- Verify that all slats are securely fastened and evenly spaced.
- Check for any loose connections and tighten the screws if necessary.



Need Help? Call 01484 500 560 or email hello@time4sleep.co.uk - please include your order number if you have one!

