



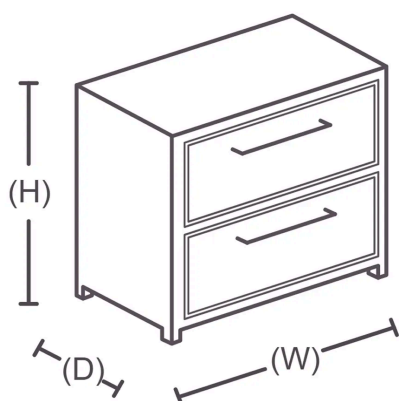
Instructions by Time4Sleep Products

## Kalmar 3 Drawer Oak Finish Bedside Only

Assembly instructions for Kalmar 3 Drawer Oak Finish Bedside Only by Time4Sleep.

### Product Information

## Kalmar 3 Drawer Oak Finish Bedside Only



### Description

Based on a classic Scandinavian inspired design the Kalmar has been designed to be both stylish and practical. Finished in Riveria Oak finish the contrasting drawer fronts make this item easy to co-ordinate with most interior design schemes. The beside is supplied flat packed for self assembly. If your looking for striking looks, good quality and great value this maybe the perfect bedside for you.

### Product specifications

#### Dimensions

Width	40.5 cm
Length	45 cm
Height	56.8 cm

#### SKU

Kalmar3DrwOak1



Instructions by Time4Sleep Products  
Kalmar 3 Drawer Oak Finish Bedside Only

## Tools

A - Allen Key M4

1



C - JCBC W Screw (M6 x 40mm)

4



E - Mini Fix Housing

10



G - CSK Screw (M4 x 20mm)

16



I - CSK Screw (M3.5 x 16mm)

36



K - Nails

16



B - Plastic Dowel (M8 x 25mm)

20



D - Mini Fix Bolt

10



F - Mini Fix Cap

10



H - CSK Screw (M4 x 50mm)

12



J - 14" Drawer Slide Sets

3

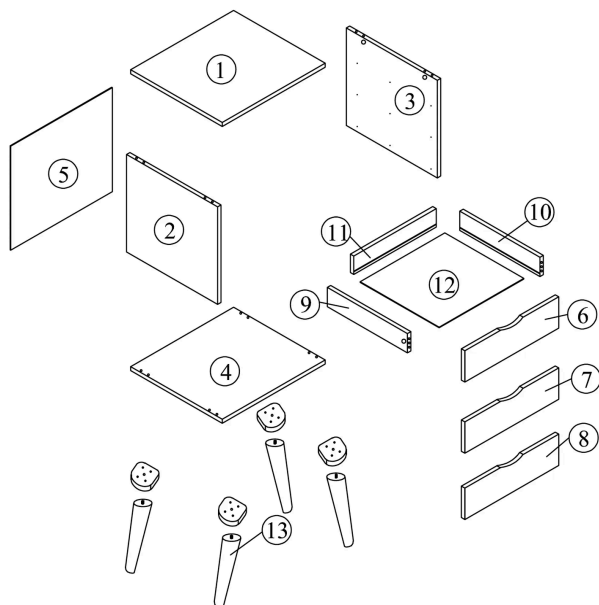


L - Mounting Legs

4



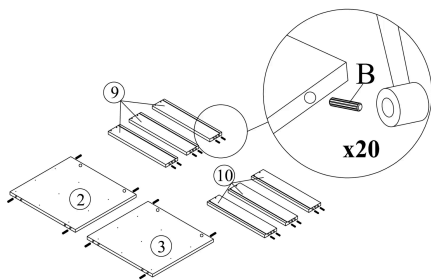
## Parts

1 Top Panel  
1 piece(s)2 Left Side Panel  
1 piece(s)3 Right Side Panel  
1 piece(s)4 Bottom Panel  
1 piece(s)5 Back Panel  
1 piece(s)6 Drawer Front Panel (1)  
1 piece(s)

7	Drawer Front Panel (2)
	1 piece(s)
8	Drawer Front Panel (3)
	1 piece(s)
9	Drawer Side Panel (L)
	3 piece(s)
10	Drawer Side Panel (R)
	3 piece(s)
11	Drawer Back Panel
	3 piece(s)
12	Drawer Bottom Panel
	3 piece(s)
13	Legs
	4 piece(s)

## Steps (13)

### 1. Insert Wooden Dowels



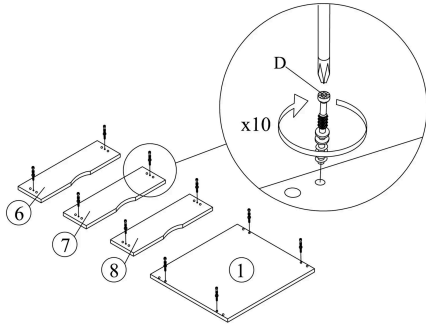
Insert the Plastic Dowels (B) into the pre-drilled holes of the following parts:

- Left Side Panel (2)
- Right Side Panel (3)
- Drawer Side Panel (L) (9)
- Drawer Side Panel (R) (10)

Ensure the dowels are fully inserted and flush with the surface. A gentle tap with a rubber mallet may help.



## 2. Attach Mini Fix Bolts

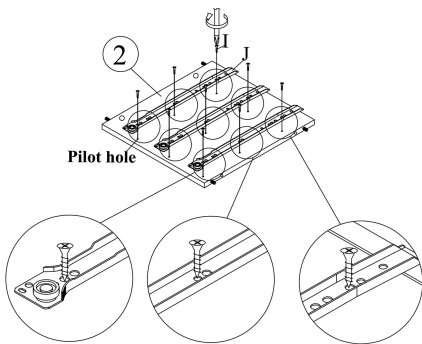


Using a Phillips screwdriver, insert and tighten Mini Fix Bolts (D) into the designated holes on the following panels:

- Top Panel (1)
- Drawer Front Panel (6, 7, 8)

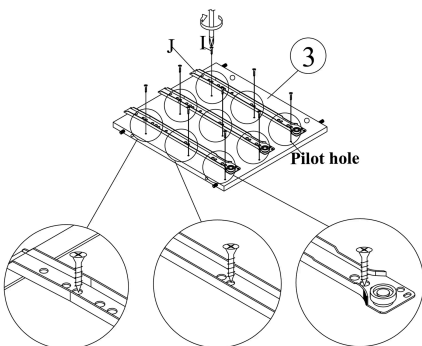
Ensure each bolt is securely screwed in, but avoid overtightening.

## 3. Attach Drawer Slides to Left Side Panel



1. Place the Left Side Panel (2) on a flat surface with the interior side facing up.
2. Align the 14" Drawer Slides (J) over the pilot holes on the panel.
3. Secure the slides using CSK Screws M3.5x16mm (I). Use a Phillips screwdriver to tighten them into the pre-drilled holes.

## 4. Attach Drawer Slides to Right Side Panel



1. Lay the Right Side Panel (3) on a flat surface with the interior side facing up.
2. Align the 14" Drawer Slides (J) with the pilot holes on the panel.
3. Use CSK Screws M3.5x16mm (I) to secure the slides to the panel using a Phillips screwdriver.

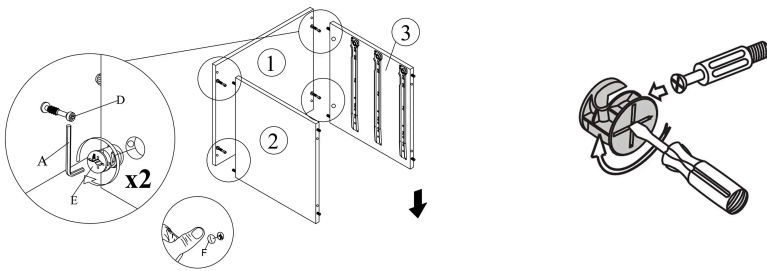


## 5. Assemble Top and Side Panels

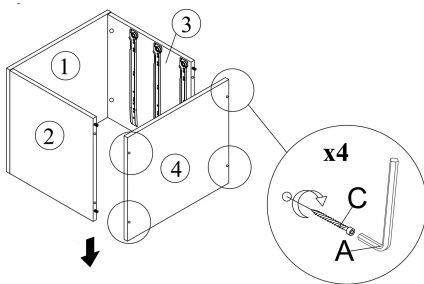
1. Join the Top Panel (1) with the Left (2) and Right (3) Side Panels by aligning the Mini Fix Bolts (D) on the top panel with the Mini Fix Housings (E) on the side panels.
2. Using the Allen Key (A), rotate the Mini Fix Housing clockwise to lock the panels in place.
3. Once secured, insert the Mini Fix Caps (F) to cover the fixings.

### This is how a mini fix works:

The head of the mini fix housing goes into the open mouth of the mini fix bolt. You then turn the mini fix housing so it tightens over the mini fix bolt.



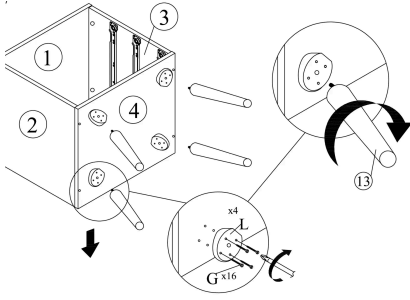
## 6. Attach the Bottom Panel



1. Position the Bottom Panel (4) between the Left (2) and Right (3) Side Panels.
2. Align the pilot holes and insert JCBC Screws (C) from the outside of the side panels into the edges of the Bottom Panel.
3. Use the Allen Key (A) to tighten all 4 screws securely.

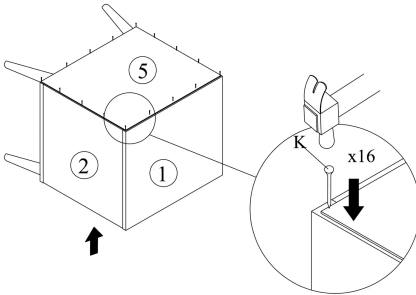


## 7. Attach the Legs



1. Turn the unit upside down to access the bottom panel.
2. Align each Leg (13) with its corresponding Mounting Plate (L) on the corners of the Bottom Panel (4).
3. Secure each plate with 4x CSK Screws (G) using a screwdriver.
4. Once all plates are attached, twist each leg clockwise into its mounting plate until secure.

## 8. Attach the Back Panel



1. Position the Back Panel (5) onto the back of the assembled unit, aligning the edges neatly with the frame.
2. Secure the panel in place using Nails (K).
3. Carefully hammer each nail along the edges, spacing them evenly to ensure a tight fit

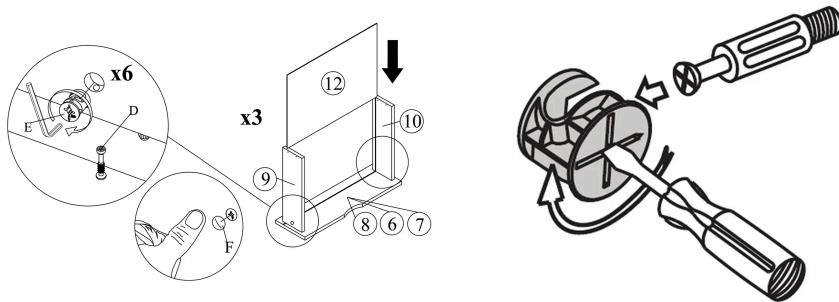


## 9. Assemble the Drawers

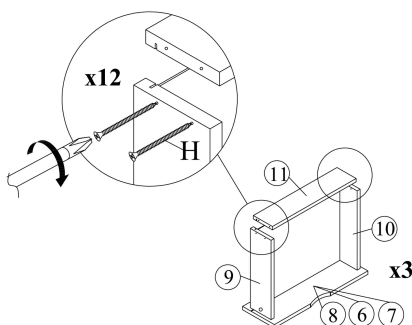
1. Attach the Drawer Side Panels (9 and 10) to the Drawer Front Panel (6/7/8) using Mini Fix Bolts (D) and Mini Fix Housings (E).
2. Secure them in place by turning the housing with the Allen Key (A).
3. Slide in the Drawer Bottom Panel (12) into the grooves.
4. Finish by pressing in the Mini Fix Caps (F) to cover the fittings.

### Mini Fix Reminder:

The head of the mini fix housing goes into the open mouth of the mini fix bolt. You then turn the mini fix housing so it tightens over the mini fix bolt.



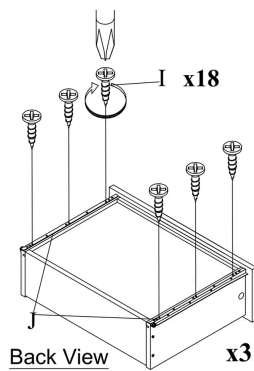
## 10. Attach Drawer Back Panels



1. Position the Drawer Back Panel (11) between the side panels of each drawer.
2. Align the pilot holes, then fasten the back panel to both sides using CSK Screws (H).
3. Tighten all screws securely with a screwdriver to ensure a solid drawer structure.

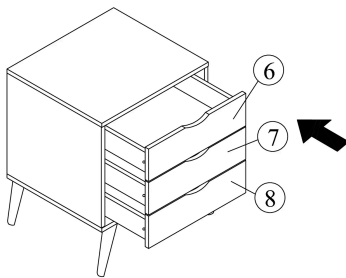


## 11. Install Drawer Slides



1. Flip each drawer to its back view.
2. Align the inner rail of the Drawer Slides (J) along the edge of the drawer sides.
3. Secure each rail using 6x CSK Screws (I) per drawer.
4. Use a screwdriver to fasten all screws firmly, ensuring the rails are flush and level.

## 12. Insert Drawers



1. Carefully align each drawer with its corresponding set of installed runners inside the unit.
2. Slide the drawers in slowly, ensuring the runners engage properly and the motion is smooth.
3. Push each drawer fully into the bedside until flush with the frame

## 13. Final Check



- Ensure all screws and fixings are securely tightened.
- Confirm that both drawers slide smoothly and align properly.
- Make sure the bedside unit stands evenly and feels stable.

Need Help? Call 01484 500 560 or email [hello@time4sleep.co.uk](mailto:hello@time4sleep.co.uk) - please include your order number if you have one!

