



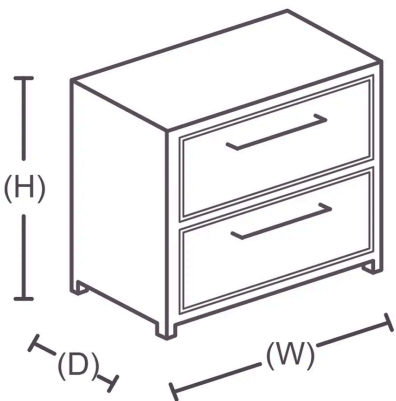
Instructions by Time4Sleep Products

Frances Rattan 1 Drawer Bedside

Assembly instructions for Frances Rattan 1 Drawer Bedside by Time4Sleep.

Product Information

Frances Rattan 1 Drawer Bedside



Description

Introducing the Frances Rattan White 1 Drawer Bedside, a beautiful rattan style bedside perfect for any room style. This stylish nightstand combines modern functionality with a touch of natural flair. The drawer fronts showcase beautiful woven rattan panels that add warmth and texture that contrasts perfectly with the white frame.

Product specifications

Dimensions

Width	50 cm
Length	40 cm
Height	54 cm

SKU

FraRattanWhiteBedside, FraRattanOakBedside



## Tools

A - Allen Key

1



C - JCBC W Screw M6x40

4



E - Mini Fix Housing

6



G - CSK Screw (M4 x 20mm)

16



I - CSK Screw (M4 x 50mm)

4



K - Mounting Leg

4



M - 14" Drawer Slide Set

1



B - Dowel

12



D - Mini Fix Bolt

6



F - Mini Fix Cap

6



H - CSK Screw (M3.5 x 16mm)

20



J - Handle Screw

1



L - Handle

1

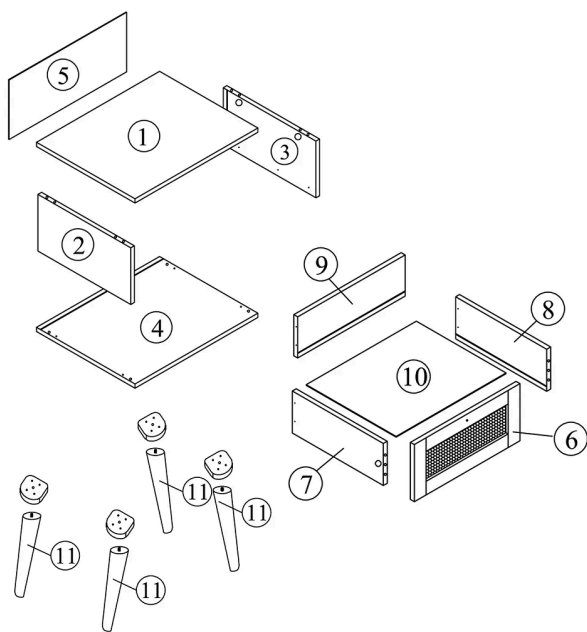


N - L Bracket

4



## Parts



1 Top Panel  
1 piece(s)

2 Left Panel  
1 piece(s)

3 Right Panel  
1 piece(s)

4 Bottom Panel  
1 piece(s)

5 Back Panel  
1 piece(s)

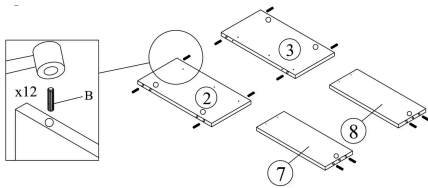


6	Drawer Front Panel	1 piece(s)
7	Drawer Left Side Panel	1 piece(s)
8	Drawer Right Side Panel	1 piece(s)
9	Drawer Back Panel	1 piece(s)
10	Drawer Bottom Panel	1 piece(s)
11	Legs	4 piece(s)

## Steps (13)

### 1. Insert Dowels

Insert Dowels (B) into the pre-drilled holes on the following panels:



1. Left Panel (2)
2. Right Panel (3)
3. Drawer Left Side Panel (7)
4. Drawer Right Side Panel (8)

Use a rubber mallet if needed to gently tap the dowels until fully inserted and flush with the surface.

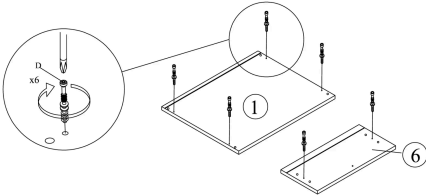


## 2. Insert Mini Fix Bolts

Insert Mini Fix Bolts (D) into the pre-drilled holes on:

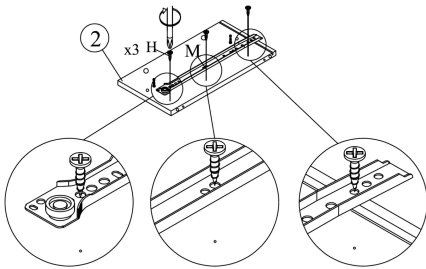
1. Top Panel (1) – 4 bolts
2. Drawer Front Panel (6) – 2 bolts

Use a Phillips screwdriver to tighten each bolt securely.



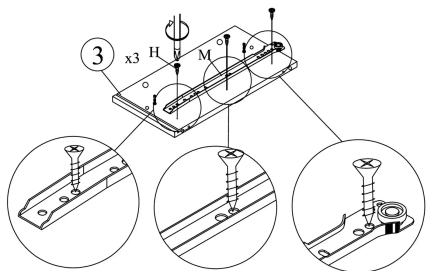
## 3. Attach Drawer Slide to Left Panel

1. Place the Left Panel (2) on a flat surface with the interior side facing up.
2. Align the 14" Drawer Slide (M) with the pilot holes.
3. Secure the slide using 3 CSK Screws M3.5x16mm (H) with a Phillips screwdriver.



## 4. Attach Drawer Slide to Right Panel

1. Lay the Right Panel (3) with the interior side facing up.
2. Align the 14" Drawer Slide (M) with the pilot holes.
3. Use 3 CSK Screws M3.5x16mm (H) to fix the slide in place using a Phillips screwdriver.

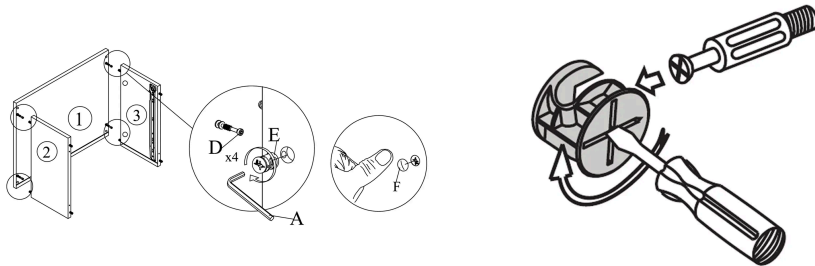


## 5. Assemble the Main Frame

1. Attach the Left Panel (2) and Right Panel (3) to the Top Panel (1).
2. Align the Mini Fix Bolts (D) on the top panel with the pre-inserted dowels on the side panels.
3. Insert Mini Fix Housings (E) into the holes on the side panels, then turn with the Allen Key (A) to lock them in place.
4. Snap Mini Fix Caps (F) over the housings for a clean finish.

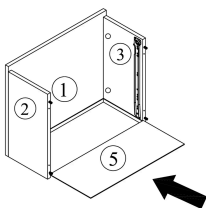
### This is how a mini fix works:

The head of the mini fix housing goes into the open mouth of the mini fix bolt. You then turn the mini fix housing so it tightens over the mini fix bolt.

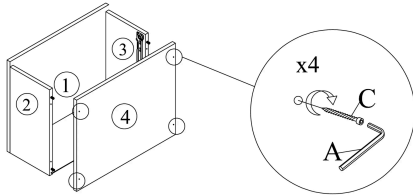


## 6. Insert the Back Panel

1. Slide the Back Panel (5) into the grooves on the inner edges of the Left Panel (2), Right Panel (3), and Top Panel (1).
2. Push it all the way in until it sits flush against the frame.

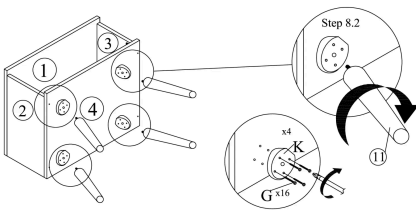


## 7. Attach the Bottom Panel



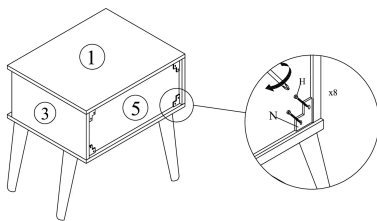
1. Position the Bottom Panel (4) against the bottom edge of the assembled frame.
2. Use 4 JCBC W Screws M6x40 (C) to secure the panel from underneath, tightening each one with the Allen Key (A).

## 8. Attach the Legs



1. Screw the Mounting Legs (K) into the pre-marked corners underneath the Bottom Panel (4).
2. Use 16 CSK Screws M4x20mm (G)—4 per leg—to secure each one with a Phillips screwdriver.
3. Once all mounts are secured, screw in the Legs (11) by hand, rotating clockwise until tight.

## 9. Reinforce Frame with L Brackets

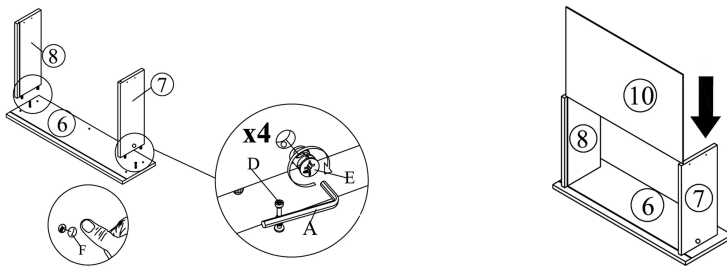


1. Attach 4 L Brackets (N) to the inner corners of the bedside frame.
2. Use 8 CSK Screws M3.5x16mm (H)—2 per bracket—to secure them with a Phillips screwdriver.



## 10. Assemble the Drawer Frame

- Connect the Left (7) and Right (8) Drawer Side Panels to the Drawer Base (6).
- Use Mini Fix Bolts (D) and Mini Fix Housings (E), then tighten with the Allen Key (A).
- Cover with Mini Fix Caps (F).
- Slide the Drawer Back Panel (10) into place vertically.

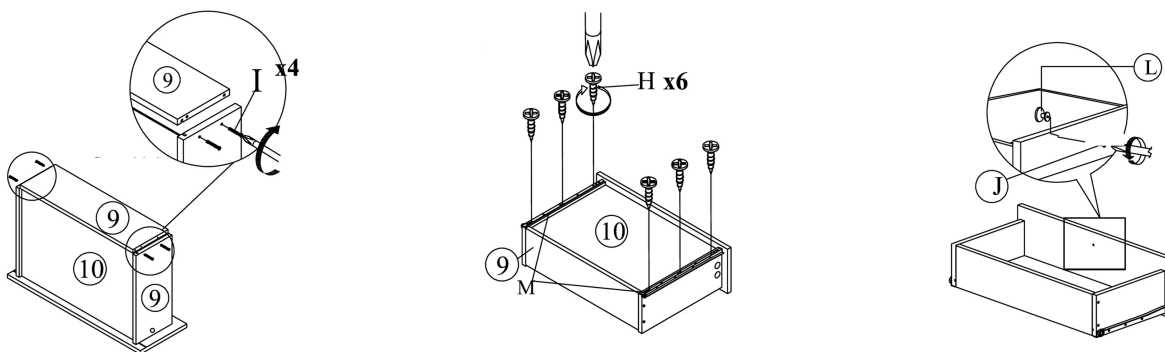


## 11. Complete the Drawer Assembly

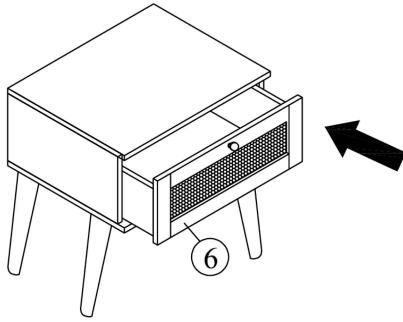
1. Attach both panels (9) to the drawer sides (7 & 8) using 4x CSK Screws M4x50mm (I).
2. Ensure they're flush and aligned correctly.
3. Flip the drawer over and secure the Drawer Bottom Panel (10) to the frame with 6x CSK Screws M3.5x16mm (H) through the pre-drilled holes in the rails (M).

### Install the Handle (L):

1. Use the Handle Screw (J) to fix the Handle (L) to the Drawer Front.
2. Tighten with a screwdriver through the marked center hole.

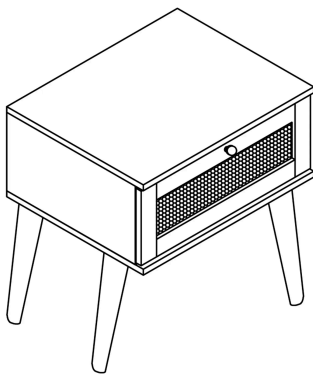


## 12. Insert the Drawer



1. Carefully slide the assembled drawer (6) into the main frame.
2. Align the runners on the drawer with the slides installed inside the unit.
3. Push gently until the drawer clicks into place.

## 13. Final Check



- Ensure all screws and fixings are securely tightened.
- Confirm that both drawers slide smoothly and align properly.
- Make sure the bedside unit stands evenly and feels stable.

Need Help? Call 01484 500 560 or email [hello@time4sleep.co.uk](mailto:hello@time4sleep.co.uk) - please include your order number if you have one!

