



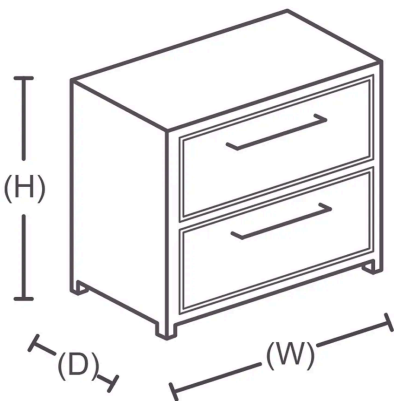
Instructions by Time4Sleep Products

Emma 2 Drawer Bedside

Assembly instructions for Emma 2 Drawer Bedside by Time4Sleep.

Product Information

Emma 2 Drawer Bedside



Description

Add style to your bedroom with the modern charm of the Emma Oak Bedside. Featuring two convenient drawers, it's perfect for storing bedtime essentials, books, and more. Emma effortlessly blends style and functionality, adding a touch of sophistication to any bedroom decor.

Product specifications

Dimensions

Width	45 cm
Length	35.5 cm
Height	45 cm

SKU

Emma2DrwOak, Emma2DrwWhite



Tools

A - Allen Key

1



C - Mini Fix Bolt

12



E - Mini Fix Cap

12



G - CSK Screw (M4 x 50mm)

8



I - Drawer Slider

2



B - Dowel

26



D - Mini Fix Housing

12



F - CSK Screw (M3.5 x 16mm)

24



H - Nail

14

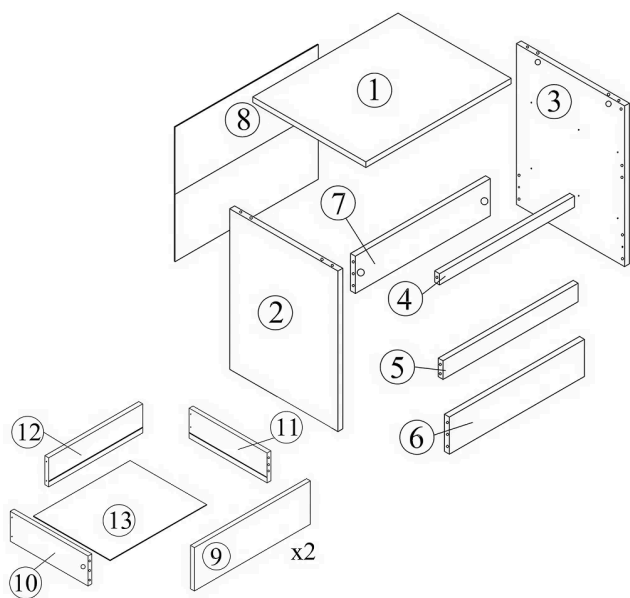


J - White Nail

4



Parts



1 Top Panel
1 piece(s)

2 Left Side Panel
1 piece(s)

3 Right Side Panel
1 piece(s)

4 Top Support Bar
1 piece(s)

5 Drawer Support Bar
1 piece(s)

6 Front Leg Panel
1 piece(s)

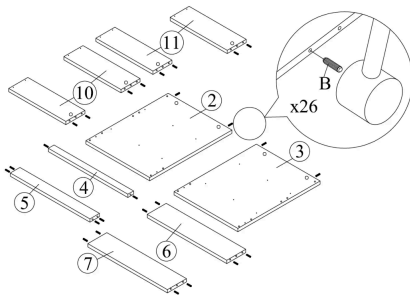
7 Back Leg Panel
1 piece(s)



8	Back Panel 1 piece(s)
9	Drawer Front Panel 2 piece(s)
10	Drawer Side Panel (L) 2 piece(s)
11	Drawer Side Panel (R) 2 piece(s)
12	Drawer Back Panel 2 piece(s)
13	Drawer Bottom Panel 2 piece(s)

Steps (14)

1. Insert Dowels into All Panels



Insert wooden dowels (B) into all pre-drilled holes on the following panels:

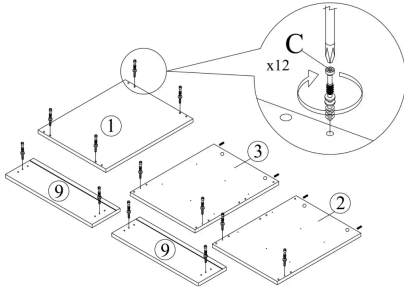
- Left Side Panel (2)
- Right Side Panel (3)
- Top Support Bar (4)
- Drawer Support Bar (5)
- Front Leg Panel (6)
- Back Leg Panel (7)
- Drawer Side Panels – Left (10) and Right (11)

Use a rubber mallet to gently tap the dowels into place for a secure fit.



2. Insert Mini Fix Bolts

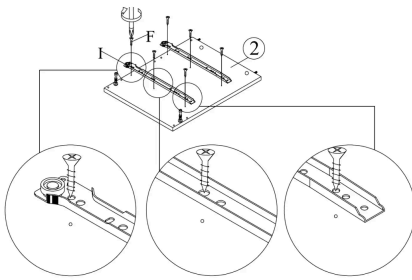
Using a screwdriver, screw Mini Fix Bolts (C) into the pre-drilled holes on the following panels:



- Top Panel (1)
- Left Side Panel (2)
- Right Side Panel (3)
- Both Drawer Front Panels (9)

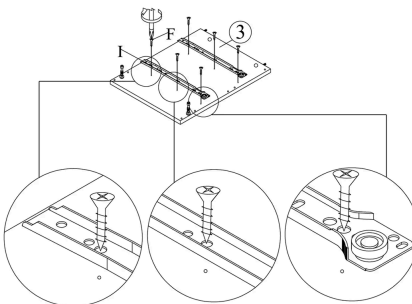
Tighten all 12 bolts securely.

3. Attach Drawer Slides to Left Side Panel



1. Take the Left Side Panel (2) and position it with the inside facing up.
2. Align the drawer slides (I) with the pre-drilled holes on the inside face.
3. Use 6 CSK Screws (F) to secure the drawer slides in place.

4. Attach Drawer Slides to Right Side Panel



1. Place the Right Side Panel (3) with the inside facing up.
2. Align the drawer slides (I) to the pre-drilled holes.
3. Use 6 CSK Screws (F) to fix the slides securely.

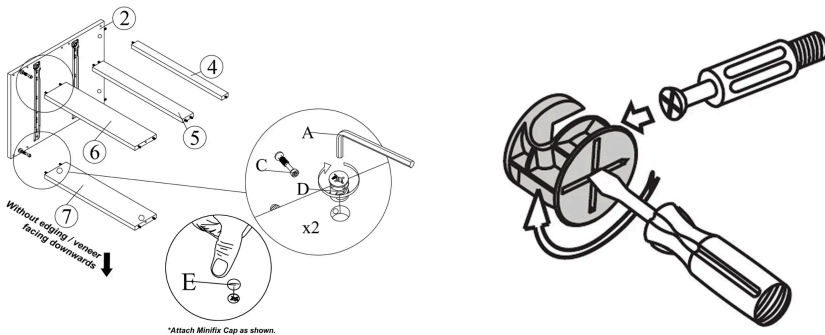


5. Attach the Support Bars to the Left Side Panel

1. Position the Left Side Panel (2) with the drawer slide side facing up.
2. Align the Top Support Bar (4), Drawer Support Bar (5), and Back Panel (6) to the side panel.
3. Insert 2 Mini Fix Bolts (C) into the ends of the support bars, and tighten them into the Mini Fix Housings (D) using the Allen Key (A).
4. Press on 2 Mini Fix Caps (E) to cover the connectors once secured.

This is how a mini fix works:

The head of the mini fix housing goes into the open mouth of the mini fix bolt. You then turn the mini fix housing so it tightens over the mini fix bolt.

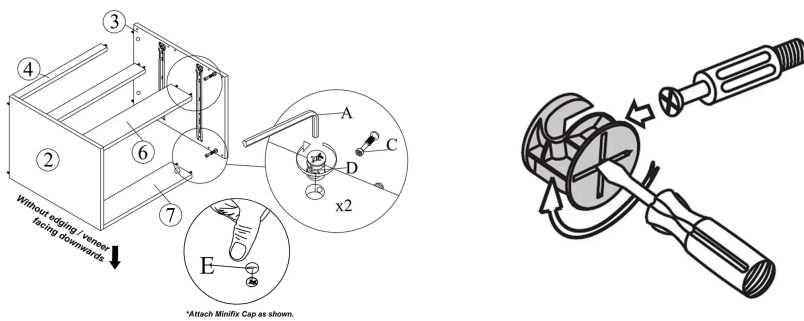


6. Complete the Frame Assembly

1. Position the Right Side Panel (3) opposite the Left Side Panel (2).
2. Align the support bars (4, 5, and 6) and Back Panel (7) with their corresponding holes on the Right Side Panel.
3. Insert 2 Mini Fix Bolts (C) into the exposed ends of the bars, tighten using the Allen Key (A) and Mini Fix Housings (D).
4. Cover the connectors with 2 Mini Fix Caps (E).

Mini Fix Reminder:

The head of the mini fix housing goes into the open mouth of the mini fix bolt. You then turn the mini fix housing so it tightens over the mini fix bolt.

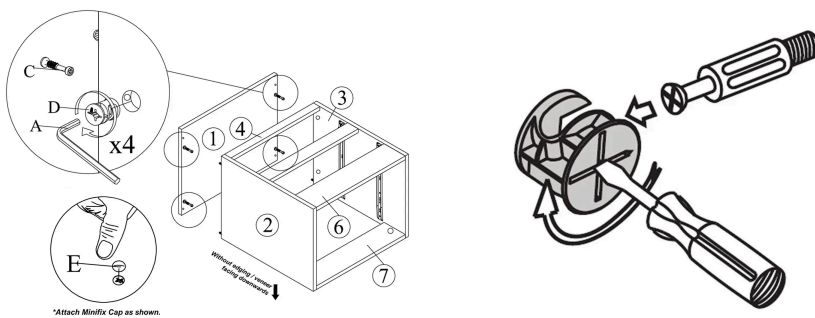


7. Attach the Top Panel

1. Place the Top Panel (1) on top of the assembled unit.
2. Align it with the Side Panels (2 and 3), Top Support Bar (4), and Drawer Support Bar (6).
3. Insert 4 Mini Fix Bolts (C) into the pre-drilled holes and secure using the Allen Key (A) and Mini Fix Housings (D).
4. Press 4 Mini Fix Caps (E) into place to conceal the fittings.

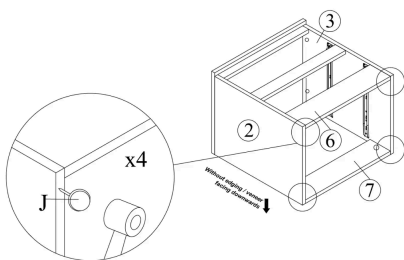
Mini Fix Reminder:

The head of the mini fix housing goes into the open mouth of the mini fix bolt. You then turn the mini fix housing so it tightens over the mini fix bolt.

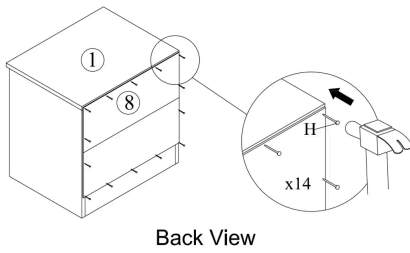


8. Insert the White Nails

1. Align the 4 corners at the back of the unit as shown.
2. Insert the 4 White Nails (J) into the pre-drilled holes.
3. Tap them in gently using a rubber mallet.



9. Assemble the Drawer Frame



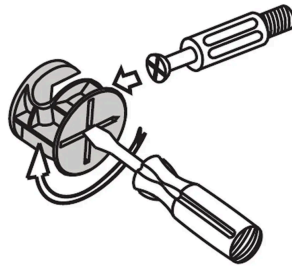
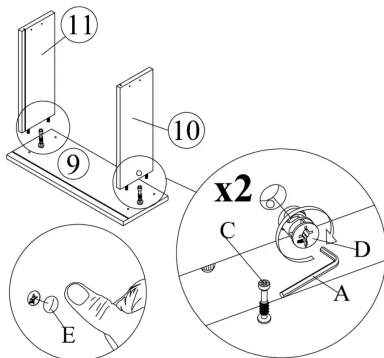
1. Connect the Left (10) and Right (11) Drawer Side Panels to the Drawer Bottom Panel (13).
2. Use 1 Mini Fix Bolt (C) and 1 Mini Fix Housing (D) per drawer. Tighten using the Allen Key (A).
3. Slide the Drawer Back Panel (12) into the grooves at the back of the drawer frame.
4. Snap on 1 Mini Fix Cap (E) to cover the fixing point.

10. Secure Drawer Sides

1. Insert 1 Mini Fix Bolt (C) into each drawer side (Left 10 and Right 11).
2. Align and tighten the bolts using the Allen Key (A) and secure with 1 Mini Fix Housing (D) per side.
3. Snap on 2 Mini Fix Caps (E) to cover the connections.

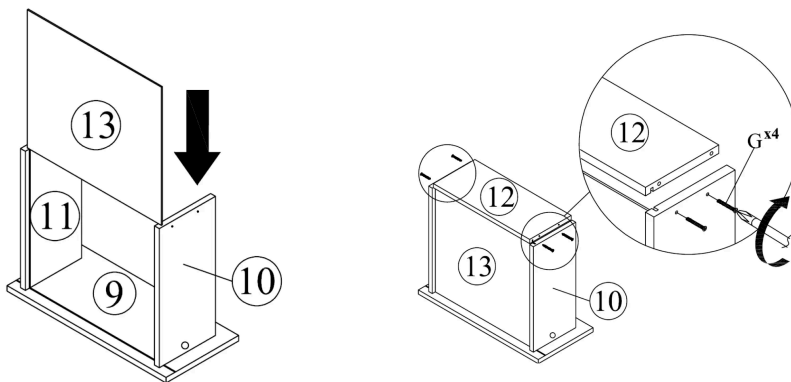
Mini Fix Reminder:

The head of the mini fix housing goes into the open mouth of the mini fix bolt. You then turn the mini fix housing so it tightens over the mini fix bolt.

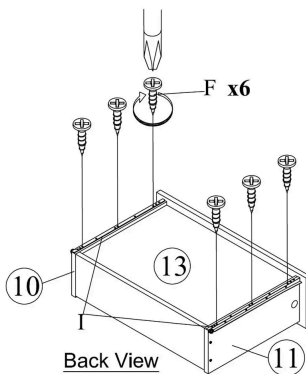


11. Insert the Drawer Bottom and Attach Back Panel

1. Drawer Bottom Panel (13) into the grooves on the assembled drawer frame.
2. Ensure the bottom panel fits securely and aligns properly within the slots of the side panels (10 and 11).
3. Attach Drawer Back Panel (12) to the end of the drawer.
4. Align the panel with the dowels and holes on Parts 10 and 11.
5. Secure it using 4x CSK Screw M4x50mm (G) as shown in the detail view and tighten screws with a screwdriver until the drawer back panel is firmly attached.



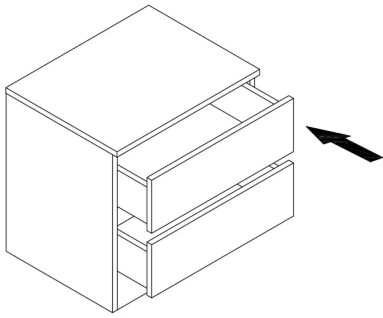
12. Secure the Drawer Bottom Panel



1. Flip the drawer frame so the back side is facing you.
2. Ensure Drawer Bottom Panel (13) is flush and properly aligned with the frame.
3. Use 6x CSK Screws M3.5x16mm (F) to secure the bottom panel into Drawer Side Panels L & R (10 and 11).
4. Insert the screws into the pre-drilled pilot holes and tighten using a screwdriver.

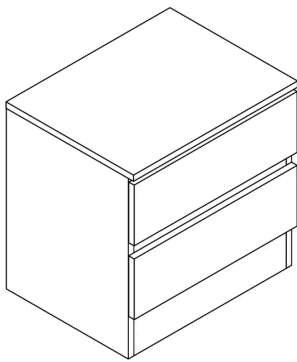


13. Insert the Drawers



1. Carefully slide the drawers into the runners until they are fully inserted.
2. Ensure smooth operation by testing the opening and closing of both drawers.

14. Final Check



- Ensure all screws and fixings are securely tightened.
- Confirm that both drawers slide smoothly and align properly.
- Make sure the bedside unit stands evenly and feels stable.

Need Help? Call 01484 500 560 or email hello@time4sleep.co.uk - please include your order number if you have one!

